

# Capturing Your Interests~

Finding your fit for your classes, career,  
college, or just being YOU!

---

Follow your strengths and do what you love! Remember,  
whatever career you may have will not define you as a person,  
but it can sure help to get paid and be successful in something  
you enjoy!



# Let's Begin to EXPLORE!

Start with celebrating yourself, and focusing on what makes you

## Begin with the end in mind:

- What are your goals, values and wants?
- What are your interests, abilities, classes you like, your learning style?

## Identify your interests, then:

- **Explore** Careers that fit your results
- **Discover** what requirements those jobs have
- Fit similar classes into your current ICAP
- **Plan** ahead and find the schools that offer those programs
- Remember what G.P.A and test scores those schools want





# This is not a race, or a final destination

## #1- Interest Inventory

### WHERE ARE YOU IN YOUR JOURNEY?

**I DON'T EVEN KNOW WHAT I LIKE!**  
Let's start with some personality quizzes! These can help narrow down fields you may shine in!

**\*16 Personalities:**



**\*Emergenetics:** Ask your counselor!

**\*Naviance tab:** Go to the "Self Discovery" tab & start the "Career" Surveys, you can do all of the surveys if you'd like!



## #2- Explore Careers

### FOUND SOME INTERESTING THINGS?

Now that you've found some "Career Concentrations" (fields), let's explore

**\*US Labor Stats:**



**\*OHS Career Concentrations:**

Ask your counselor about classes~ look at the Career Concentrations poster

**\*Naviance tab:** Go to the "Careers" tab & check out what your results say about what the job entails & related occupations/majors (in the career clusters)



### WHAT TYPE OF EDUCATION DO I NEED?

Found some interesting careers? Now see what degree's you need

**\*US Labor Stats:**



Career Outlook

**\*Naviance tab:** In the "Careers" tab see the average pay & type of education needed

#3- Discover Needs

### WHAT DO I WANT OUT OF MY EXPERIENCE?



#4- Plan Ahead

### HOW DO I FIND SCHOOLS?

So where are the schools that offer what I want?

**\*Naviance tab:** On the "Colleges" tab start a "Super College Match". Input your above list ( location, career focus) & start to compare your matches. Save them in the "My Colleges I'm Thinking About" list



# YOUR PERSONALITY IS THE KEY!

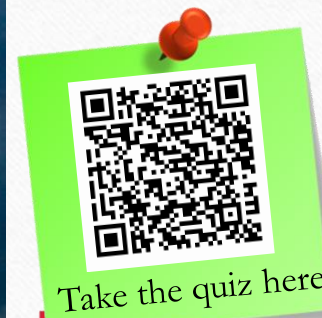
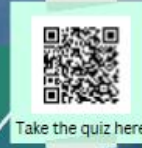
DO PERSONALITY INVENTORIES FIT INTO CAREER SEARCHES? YES! YOU ARE AN INDIVIDUAL & CAN CREATE YOUR OWN PATH. CAREER CONCENTRATIONS ARE GUIDES THAT CAN HELP YOU SEE WHERE TO FOCUS AND TO KNOW WHAT YOUR OFFERINGS ARE. FIND A FIELD YOU ARE INTERESTED IN AND SEE HOW IT FITS IN WITH A PERSONALITY QUIZ AND THE TYPES OF INTELLEGINCE THAT MAKES YOU SHINE!



Above is a basic example of the "Emergenetics" personality test results. What does your "Emergenetics" say about your strengths? How does it fit in with your other Career Interests? How can you use that in your searches? Have fun finding out more about you!



There are so many great personality tests out there to explore. To the left is an example of the Myers-Briggs (16 Personalities) and above demonstrates the variety in which we are all intelligent.



## #1-Interest Inventories~

Check out some of these Inventories (along with Naviance) to get started

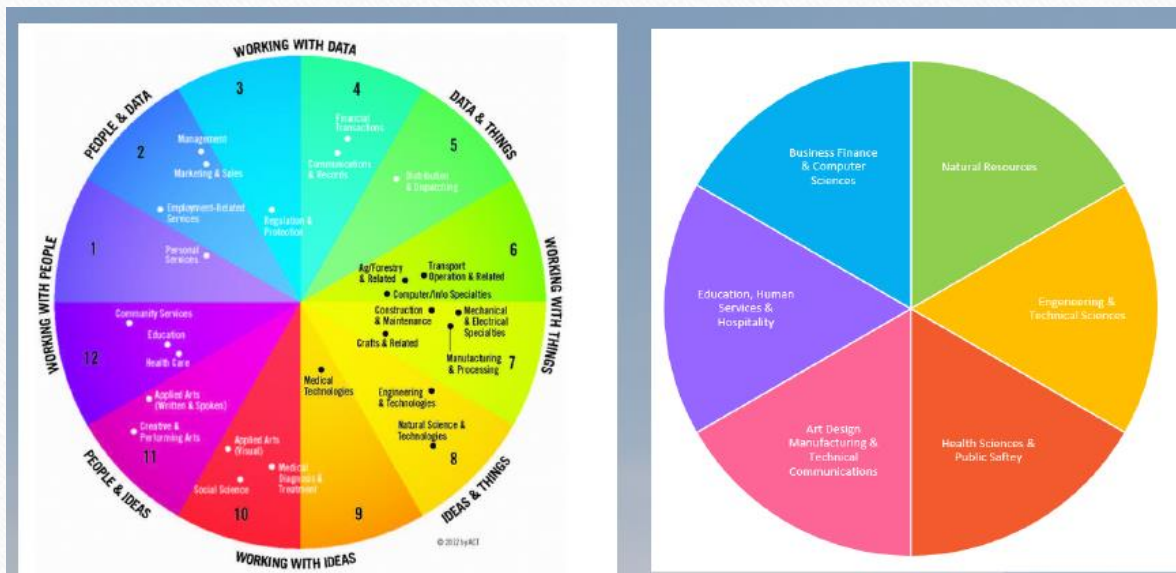
What Type of Learner Are You?





# #2- Explore Careers~

Now match your interests, strengths and style to what Career traits are found in the examples of these Inventories and the Career Exploration data found in Naviance



This is the "World of Work" map you will see from the ACT and Work Keys supported Career Searches. Where do your strengths and interests reside? Remember, these are examples and do not represent every job out there. Think about how you those in these fields spend their time, what types of tasks they do, how their day looks like. Then think about you and your results- what you enjoy doing, what you would like to also get paid to do and explore more fields that share these attributes

Here are some Career Clusters that we offer at Overland. This map aligns similarly (but not exactly) with the one to the left. Everyone is an individual, so think about what you enjoy learning about, what may continue your success in learning. Check out some of the classes we offer in the career fields that match your searches. Remember, you can take a wide array of courses, but matching your interests to your strengths is a great way to plan for life after OHS!

Naviance Home Self-Discovery Courses Careers Colleges Planner

Demo's Future Planning

Self-Discovery Home  
Career Cluster Finder  
Career Interest Profiler  
Career Key  
Intelligences®  
Learning and Productivity®  
Personality®  
Skills®  
StrengthsExplorer®

#1-Interest Inventories

Naviance Home Self-Discovery Courses Careers Colleges Planner

Demo's Future Planning

Career Exploration  
Favorite Careers and Clusters  
Explore Careers  
Explore Clusters and Pathways

Military Exploration  
Favorite Military Branches  
Explore Military Branches

Experiential Exploration  
Search Job Opportunities  
Find Work-Based Learning  
Explore Roadtrip Nation Videos

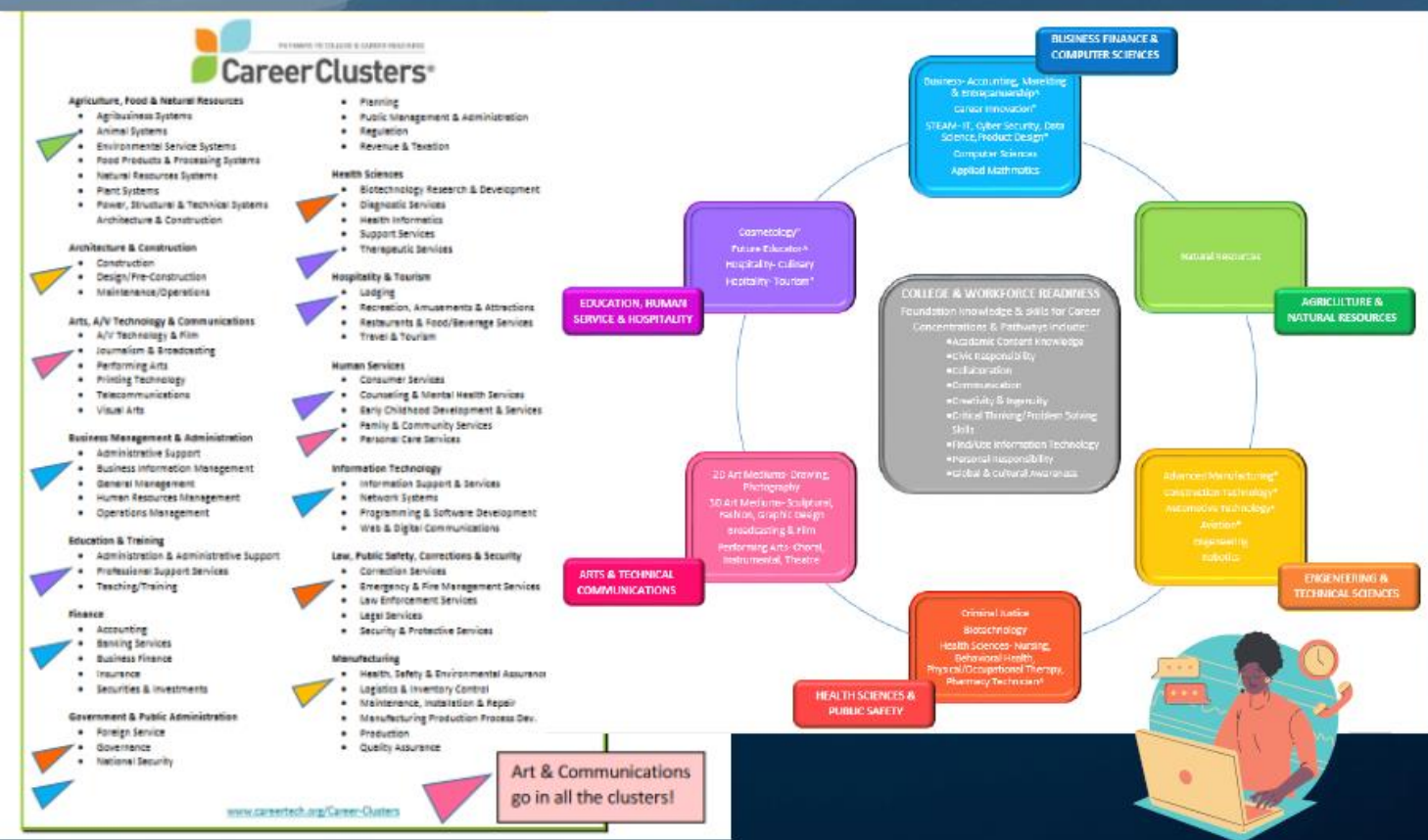
#2- Explore Careers



How do your interests match the current career trends? Find your Career Cluster!



This map matches the Colorado Career Clusters. These are some of the Career Concentrations and Pathways within these fields that Overland offers. Which classes would you like to take? What fields are you interested in? Where do your strengths meet your interests? You can create your own "MyCap" to help plan and explore!





# Match Your Interests to Your Classes~

Your Career Cluster and ICAP work together! Make sure if you are interested in a subject to plan for it during registration and take relevant classes. You can even earn an extra recognition at Graduation!

CAREER CONCENTRATION PATHWAYS

Pathway	What year can you start?	9	10	11	12	+ Supportive Studies
<b>ENGINEERING &amp; TECHNICAL SCIENCES</b>						
Advanced Manufacturing*			Manufact. Fund. CNC Machining	Man. Fund 2. CNC Machine 2		Technology Projects
Construction Technology*			Construction 1	Construction 2	Sr. Project/Int.	
Automotive Technology*	Consumer Auto		Auto 1 & 2	Auto 3. High Performance		
Aviation- Maintenance*			Gen. Air Maint. 1	Gen Air Maint 2. Airframe 1-3	Airframe 4	
Aviation- Flight *			Aviation Fundamentals. Drone Pilot			
Engineering	Technology Projects		Comp. Aided Des. Engineering Design	Senior Project/Internship		
Robotics	Technology Projects		Robotics	Robotics & Electro-Mech.	Senior Project/Int.	
<b>HEALTH SCIENCES &amp; PUBLIC SAFETY</b>						
Criminal Justice				Criminal Justice 1 & 2	2 Soc. Electives	AP Psych, Forensics, Genetics, Journalism, Pol. Sci., SOAR
Biotechnology	Intro to Sci Research		AP Bio. Adv. Sci Research		Biotechnology	Anat/Phys. Epic Med., Forensics, Genetics, Microbio.
Health Sciences- Nursing*	Intro to Healthcare		Intro to Health Science A	Intro to Health Sci B. CNA	CNA/Adv. Nursing	Anatomy & Physiology
H. Sciences- Behavioral Health*				Behav. Health Teach	2 Soc. Electives	Child & Adolescent Behavior, Epic Medical Careers,
Health Sciences- PT/OT Therapy*				Intro to PT/OT	2 Soc. Electives	Interpersonal Relationships, Genetics,
H. Sciences- Pharmacy Tech. *					Pharm Tech. 2 Soc. Elect.	Psych. of Sports
<b>ARTS DESIGN MANUFACTURING &amp; TECHNICAL COMMUNICATIONS</b>						
2D Arts- Drawing & Design	Drawing & Painting 1 & 2		Draw/Paint. 3. AP Studio Art 2D	AP Studio Art Drawing		AP Art History, Digital Commercial Photo
2D Arts- Photography	Photography 1 & 2		Photo 3 & 4. AP Studio Art 2D			
3D Arts- Sculptural Engineering	Beg 3D Art. Int. 3D Art		Adv. 3D Art	AP Studio Art 3D		AP Art History, AP Studio Art 2D,
3D Arts- Fashion/Comm. Design	Fashion 1 & Fashion 2			AP Fashion/Studio Art 3D		Digital Commercial Photo,
3D Arts- Graphic Design	Graphic Design 1 & 2		Graphic Design 3. Adv. Graphic	AP Studio Art		Interior Design 1, Interior Design 2
Broadcasting & Film	Video Prod. 1 & 2, Web Design A&B, OTV		Digital Media & Communication			Tech Projects, Digital Commercial Photo
Performing Fine Arts- Choral	Overland Singers, Plainsmen, Trebellians		Concert Choir, Jewell Ave Jazz	Cecilians, Nine Mile Jazz		Piano, Music Theory, AP Music Theory
P.F. Arts- Instrumental Band	All bands* audition placed					
P.F. Arts- Inst. Orchestra	String Orchestra, Concert Orchestra		Overland Symphony			
Performing Fine Arts- Theatre	Theatre 1, Musical Theatre Tech Theatre		Acting 1	Acting 2, Advanced Acting		
<b>EDUCATION, HUMAN SERVICES &amp; HOSPITALITY</b>						
Cosmetology*				Cosmo 1	Cosmo 2, Esthetics	
Future Educator*				Future Educator 1 & 2		
Hospitality-Culinary Arts*	Culinary Essentials 1		Culin Ess. 2, Baking/Pastry, ProStart 1&2	ProStart Youth Apprenticeship		
Hospitality- Tourism *	2 OHS Fine Arts Electives		Resort & Event Management	Hospitality Youth Apprent.		
<b>BUSINESS FINANCE &amp; COMPUTER SCIENCES</b>						
Business- Accounting	Personal Finance, Intro to Business		Legal Enviro of Business, Accounting 1	Accounting 2		AP Macro & Micro Economics,
Business- Marketing	Personal Finance, Intro to Business		Legal Enviro of Business, Marketing 1	Marketing 2		Intro to PC Applications
Business- Entrepreneurship*	Intro to Business		Project Management for Entrep. 1 & 2	Manag for Entrep. 3, CTE Cap		
Career Innovations*				Options available through CTE		
Information Technology*	Intro to Comp Prog or AP Computer Sci		Virtual Reality 1 & 2	Intro to Data Struc		Tech Projects
Cyber Security*	Intro to Comp Prog or AP Computer Sci		Cybersecurity 1 & 2,	Cyber Security 3		
Data Science*	Intro to Comp Prog or AP Computer Sci		Data Science 1 & 2	CTE Capstone IT		
STEAM Product Design*			Product Design 1-3, Adv. Robotics & Systems	CTE Capstone STEAM		Computer Aided Design
Computer Science	AP Comp Science Principles		AP Computer Science A	Mobile App Dev, Data Struc.	Senior Project/Int.	
Applied Mathematics	AP Comp Science Principles		AP Computer Science A	AP Calc AB/BC, DFQ	AP Stats, Linear Algebra	
<b>AGRICULTURE &amp; NATURAL RESOURCES</b>						
Natural Resources	Environmental Club Participation			AP Enviro Science	CE Geology	AP Biology, Microbiology, Zoology

\*= CCIC pathways

^=Can be OHS or CCIC pathways

^=CTE pathways

**INDUSTRY SCHOLARS:** Students at Overland High School are afforded unique opportunities to complete a variety of career concentrations stemming across a variety of STEAM pathways and leading Industry fields.

## REQUIREMENTS:

- Meet with counselor to discuss pathway and a students 4-year plan using the proposed field of study
- Complete the Career Candidate Application
- Successfully complete the top level of their Career Concentration and/or corresponding Internship during 11<sup>th</sup> or 12<sup>th</sup> grade
- Have a minimum 3.0 unweighted GPA in their Career Concentration



## HOW DO I GET THIS AWARD?

- YOU pick this by following your interests and sticking with your course fields.
- You ELECT in by applying for the Award Senior Year.
- **Come get the Application in COUNSELING**
- Counselors will let you know if you are on track 9<sup>th</sup>-12<sup>th</sup> grade and if you completed at Senior Checkout



## #3- Discover Needs~

Do a deeper dive and discover what you need to know about your findings

- **What requirements do these careers and job need?**

- 4 year degrees, 2 year degrees, certificates
- GPA requirements to get in to these programs
- Pre-requisites to enter?

#3- Discover Needs

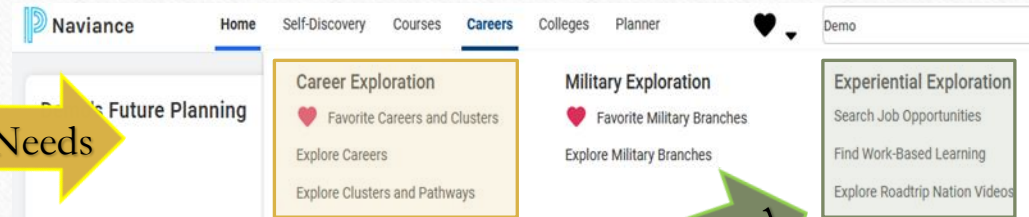
- **What is the job outlook for the future?**

- Is this career steady, growing, fading, replaced with AI?
- Location of the job markets

- **Can I make a living doing this?**

- What are the projected salaries- mean, medium, average
- What is the cost of living in these markets
- Check out this **Budgeting Sheet!**

- (Hit "File", "Make a Copy" and Save w/ *your name Budget*. You must be logged into Goggle Docs to access) You can change the starting amount ~ex. is at 40k~ & start with the highlighted areas



#4- Plan Ahead

- **What else can I do to prepare myself (for free!) while still in high school?**

- Career wise, CTE
- Job opportunities
- Start the Planning stage!

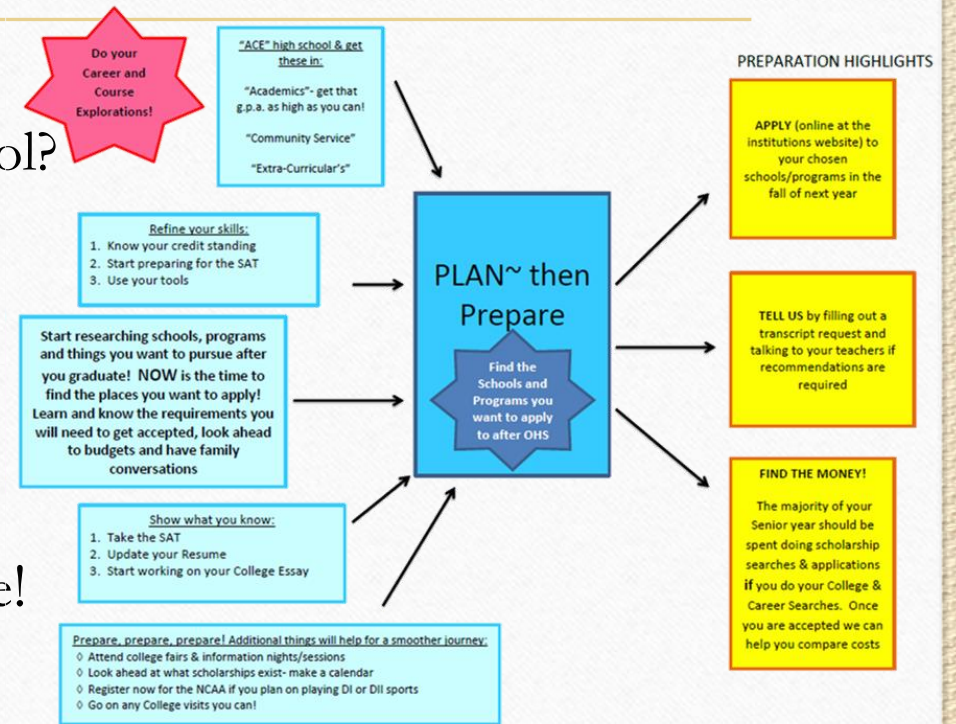


# #4 Start the Planning Stage~

Looking ahead, what options are there, what steps come next, how does Planning fit into Preparation & Culmination?

- Academic Degrees- College or University?
- Industry Certificates- Vocational or Technical School?
- Service- Military or Missions?
- Travel or Community Service- A “Gap” Year?
- Apprenticeship, Internships, Work?

- Set yourself up with a working Resume!





# The World Needs You!



**Overland has the BEST kids,  
so let yourselves shine!**

Remember, how you present yourself is how you are perceived

**Always lead with your professional skills**

Your appearance    Timeliness    Participation    Quality in Performance  
(uniforms, appropriateness) (coming prepared) (active, follow through) (punctuation, neat work)

**Always be aware of your body language**

Attentiveness to others    Acting Engaged    Body Contact  
(eye contact, listening, responding) (sitting, head up, facing people) (handshakes, hands to self)

**Always leave a positive lasting impression**

Greetings    Language    Stand by your Character  
(Say hi and bye to all) (know your audience-politeness) (this is what people believe about you!)

**Your Thoughts = Your Words = Your Actions =  
Your Habits = Your Character = Your Destiny**

## Want more?

Personality quizzes are fun- find your unique self, the world needs you!

- <https://test.careeraddict.com/tests/interests>
- <https://www.careeraddict.com/choosing-a-career>
- <https://www.truity.com/>
- <http://www.humanmetrics.com/cgi-win/jtypes2.asp>